



# Dover School District FY2018 Budget

Data

January 30, 2017

# ATTENDANCE

2/3/2017

2



## HSS Attendance

- 2014-2015 (before Dean)
  - Number of Student Tardies: 1,660
  - Number of Student Absences: 3,360
  
- 2015-2016 (1<sup>st</sup> year with Dean)
  - Number of Student Tardies: 1,746
  - Number of Student Absences: 3,410
  
- 2016-2017 (as of 1/13/17) (2<sup>nd</sup> year with Dean)
  - Number of Student Tardies: 800
  - Number of Student Absences: 1,666



## WPS

	Principal Only	Associate Principal	Dean of Students
School Year	2013-2014	2014-2015	2015-2016
Attendance Rate	95%	95%	95%
# of Total Tardies	3555	3229	3204
Habitually Truant (per DOE)	24	4	4

2/3/2017

4



## GES

- Data not included because Dean has not been at GES for a full year yet.

# BEHAVIOR

2/3/2017

6



## HSS

- Hawk's Nest visits
  - 1,133
    - 2016-2017 as of 1/13/17
    - Protocol changed for only those with formal or informal behavior plans
  - 8,850
    - 2015-2016 school year
    - Open to all students

2/3/2017


7

### Hawk's Nest

- Review expectations for specific incidents (field trips, bus, bathroom, café, etc.)
- De-escalation (calm down until ready to process)
- Check Ins – from behavior plans
- Planned Breaks – from behavior plans
- Alternative Recess
- Alternate Lunch
- ISS
- Leaving Classroom without Permission
- Rest & Refill
- Refusing to do Work in Classroom
- Practice Social Stories
- Behavior Mapping
  - Defiant or Disruptive Behavior
  - Violent Behavior
  - Property Damage
  - Inappropriate Affection
  - Threatening
  - Bullying
  - Harassment
  - Theft
  - Bathroom Behavior
  - Cafeteria Behavior

- Acting up with a Substitute Teacher
- Inappropriate Recess/Playground Behavior (eg. Throwing snow, hitting, etc)
- Inappropriate Language or Gestures
- Unsafe Behaviors (Student Safety)





## GES

	14/15	15/16	16/17 (Dean)
Referrals (Sept – mid January)	144	211	251 (no beh. Specialist)
Parent Contacts (Sept – mid January)	41	59	126
Non-referral behavior room visits (breaks – both reward and movement, quiet work space, etc.)	No data available – not many due to program set up	No data available – not many due to program set up	405
Bullying	DOE site data not avail for this year	2 investigated, 1 founded	0 (to date)

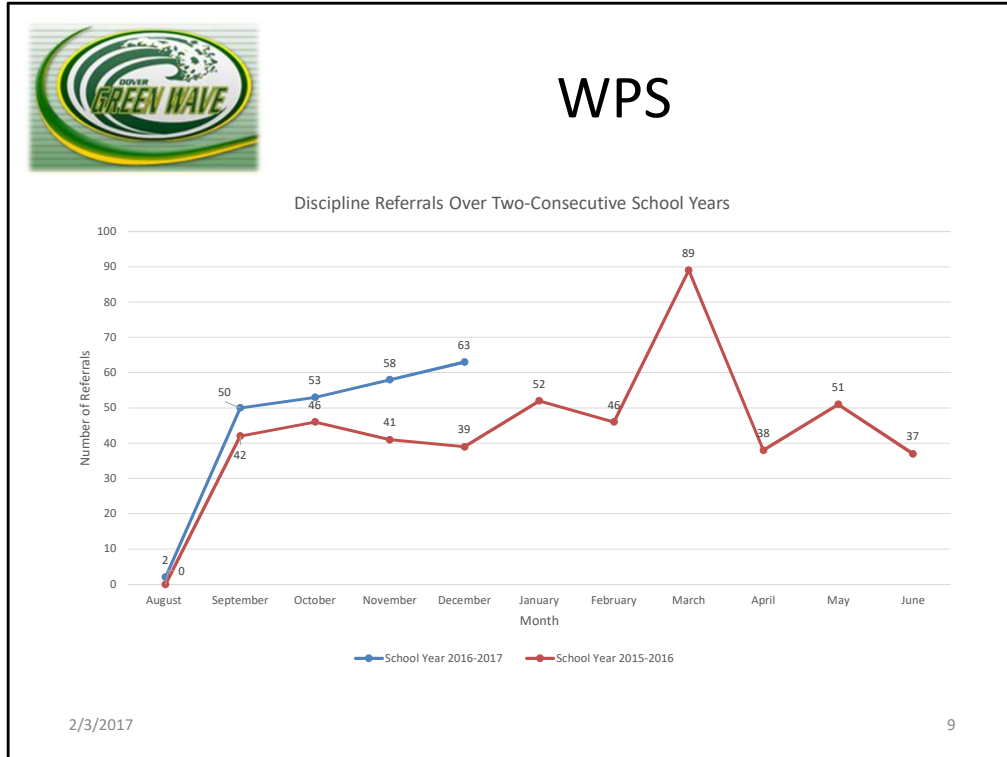
2/3/2017 8

### Data

- GES has not had a behavior specialist this year due to personnel issues – the addition of the Dean has ensured that we can continue to function and serve students, and in some aspects improve our service.
- Discipline data – “pro-rated” to Sept – mid January data to allow for accurate comparisons of pre/post dean information.

### Behavior Program

- In the 16/17 school year, GES changed how our behavior room operates. We moved the room to a central location in the building, had the behavior specialist and behavior aide in the same room, and implemented a more comprehensive behavior program to include proactive components. To help re-brand these changes, the behavior room was also renamed The Lighthouse in keeping with our school mascot, a harbor seal. Dean Tincher has been instrumental in guiding these positive, proactive changes. As you can see, the number of parent contacts has soared, as Dean Tincher checks in with parents on an ongoing basis to ensure that we are supporting students as a team between home and school.
- Dean Tincher has led a book study with our behavior team when she saw a need to adjust how our staff were responding to student misbehaviors. The book group has allowed staff to respond in a more developmentally appropriate way to students.
- Dean Tincher has implemented a weekly meeting with recess/lunch monitors to help them be proactive with student discipline during lunch and recess – the two times of the day with the highest number of referrals.



**Number of Free Time Referrals (2016-2017 to date)**

- August 4
- September 101
- October 182
- November 165
- December 169
- Total: 621**

**# of Visits Support Center Totals (2016-2017 to date)**

- August 5
- September 302
- October 472
- November 375
- December 371
- Total: 1525**



## WPS

	Principal Only	Associate Principal	Dean of Students
School Year	2013-2014	2014-2015	2015-2016
Bullying ("actual" per DOE)	18	14	6



## DHS

Offense	13-14	14-15	15-16	16-17
Drugs	16	10	13	5
Alcohol	2	0	2	2
Fighting	30	19	16	7
Theft	10	3	4	3
Bullying (Findings, not total number of investigations)	14	10	22	3
Sexual Harassment (Findings, not total number of investigations)	0	3	7	0

2/3/2017

11

# **SUPERVISION**

2/3/2017

12



## HSS

School Year	Expected number of observations	Completed number of observations
15-16 (Dean)	336 (8/staff)	309 (all year)
16-17 (Dean)	258 (6/staff)	123 (to date)



# GES

School Year	Expected number of observations	Completed number of observations
15-16 (no Dean)	281 (8/staff)	121 (all year)
16-17 (Dean)	198 (6/staff)	102 (to date)

Both administrators share the observation of all teachers, allowing teachers to receive feedback from more than one person, a benefit to helping teachers to grow in different areas.



## WPS – New

School Year	Expected number of observations	Completed number of observations
15-16 (Dean)	400 (8/staff)	402 (all year)
16-17 (Dean)	294 (6/staff)	157 (to date)

Please note that some staff (OT, PT, Speech and language, pre-school, and special education case managers) are also observed by district level staff and those numbers are included in this slide.

2/3/2017

15





## WPS 2016-2017

<b>Number of staff to be evaluated</b>	<b>49</b>
Minimum observations per staff	6
<b>Total minimum observations</b>	<b>294</b>
Minutes per observation	10
Total minimum minutes	2,940
Total minimum hours	49
Observation debriefing minutes	10
Total debriefing minutes	2,940
Total debriefing hours	49
Total hours observation/debriefing	98
Mid Year Evaluations	49
Average minutes rubric/conferences	30
Total minutes on mid-year	1470
Total hours mid-year	24.5
End of year evaluations	49
Average minutes end of year/rubric/summative	45
Total minutes end of year	2,205
Total hours end of year	36.75
Total minutes staff evaluation system	9,555
Total hours staff evaluation system	159.25

2/3/2017

16

# PROFESSIONAL DEVELOPMENT

2/3/2017

17



## PD – A GES Snapshot

- “Having a staff member who has experience outside of Dover and NH has been an invaluable asset to GES. GES is able to make improvement in behavior, parent contact, intervention services, and supervision of teachers with two administrators as opposed to holding the course with just a principal.”
- “Dean Tincher has been a strong advocate of better in-house professional development for teachers at GES. She and Principal Dunton have implemented ongoing PD this school year that is tied into the teacher evaluation system using the text The Skillful Teacher.”

# STUDENT ASSESSMENT

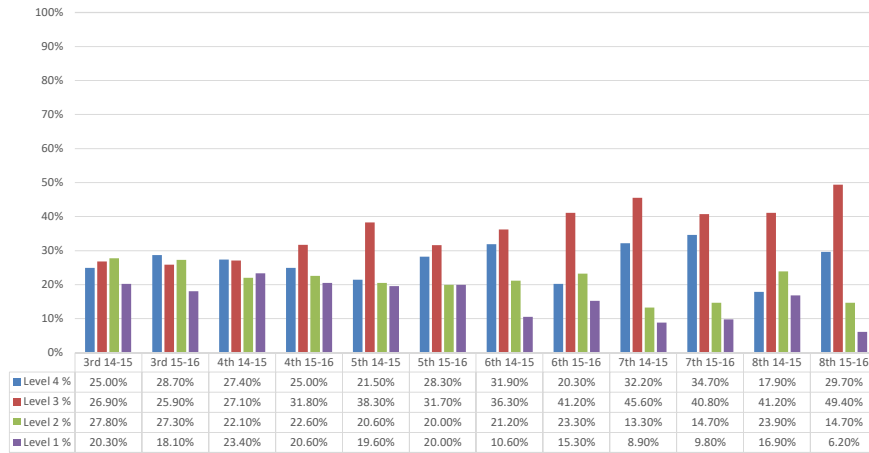
2/3/2017

19



# SBAC – ELA (3<sup>rd</sup>-8<sup>th</sup>)

Grades 3-8 - SBAC ELA



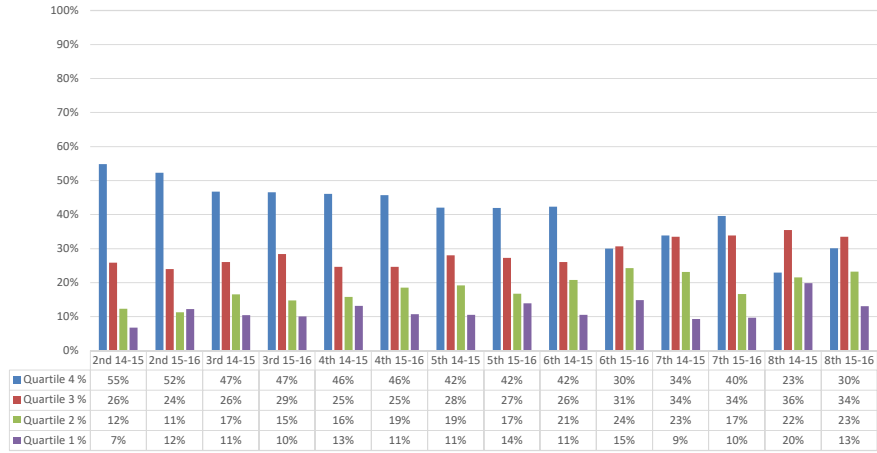
2/3/2017

20



# STAR Reading (2<sup>nd</sup>-8<sup>th</sup>)

Grades 2-8 - STAR Reading



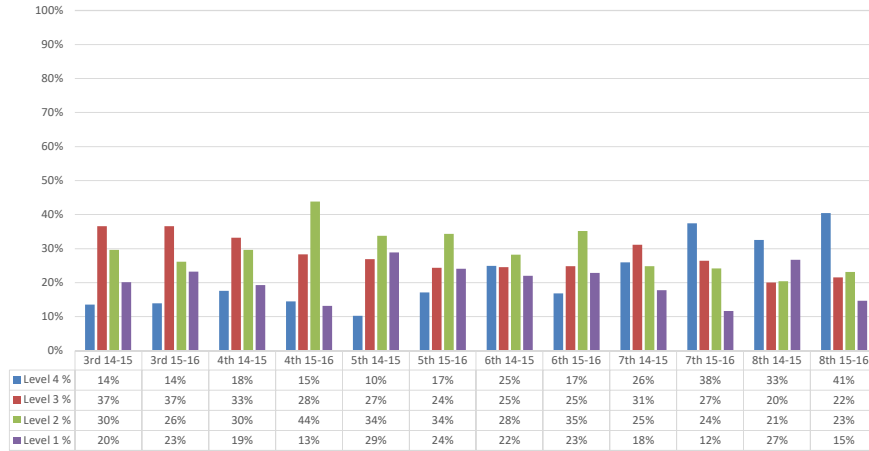
2/3/2017

21



# SBAC – Math (3<sup>rd</sup>-8<sup>th</sup>)

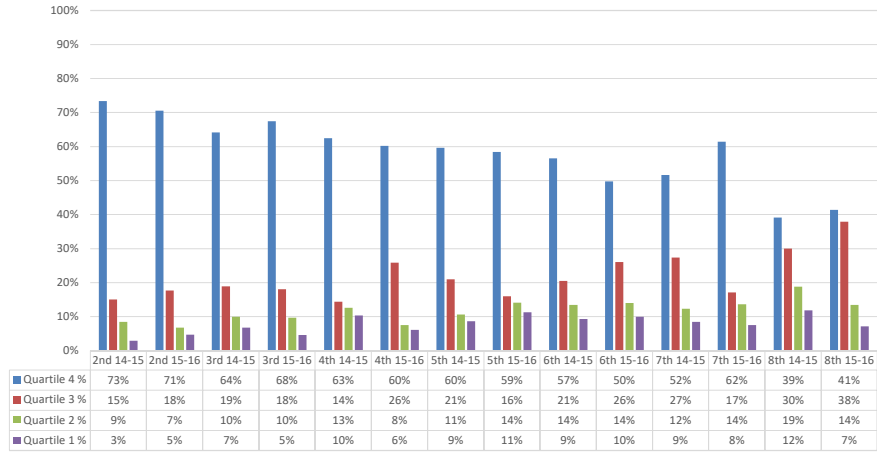
Grades 3-8 - SBAC Math





# STAR Math (2<sup>nd</sup>-8<sup>th</sup>)

Grades 2-8 - STAR Math



2/3/2017

23